

## Description

This price attractive current sensor belongs to the LPCT series and provides excellent accuracy. This sensor is particularly suited for brown field (refurbishment) low and medium voltage applications.

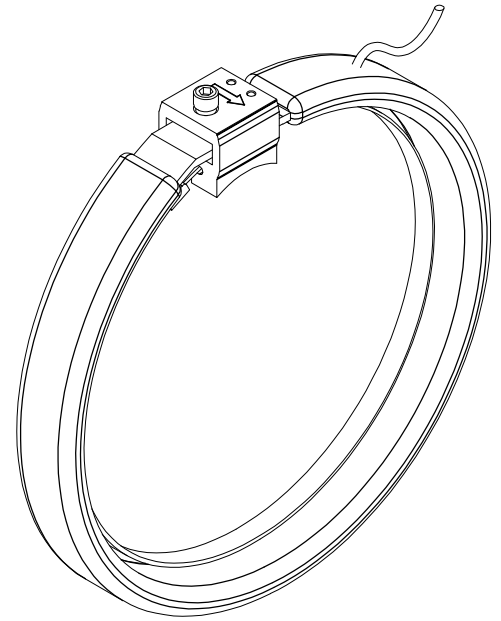
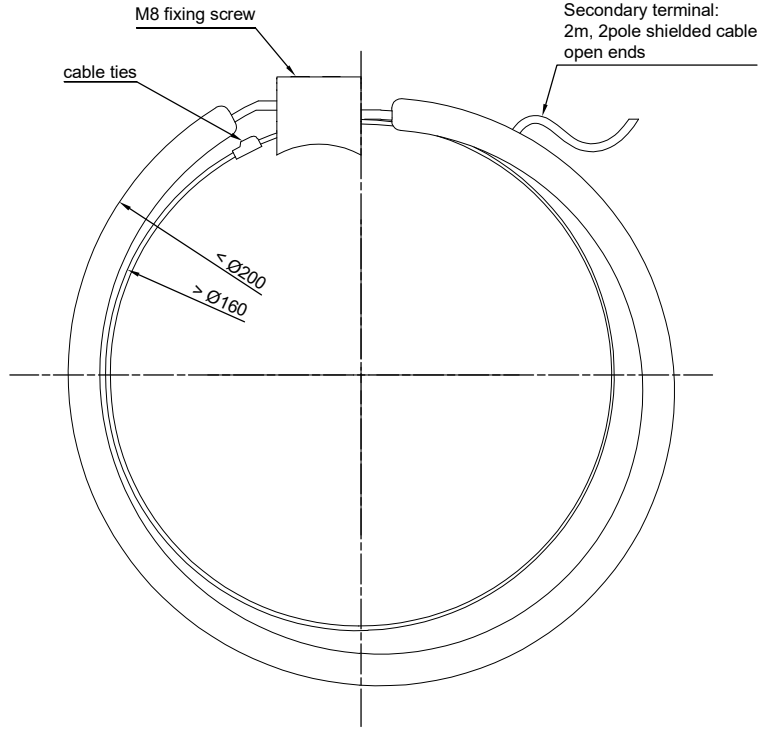
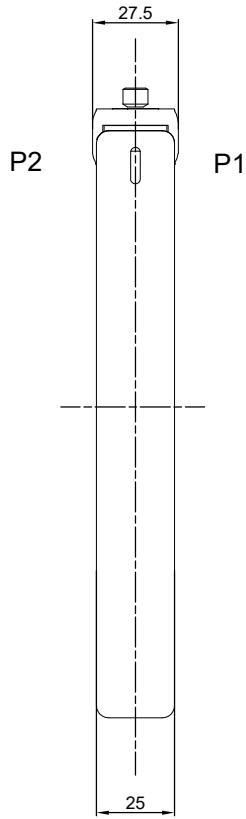
- The coil is covered with a heat shrink tube and the core is fixed with a single headless screw.
- Calibration is not necessary on site during its lifetime.
- Easy installation due to its split core.
- Wide diameter range to meet customer requests.

## Specifications

Standart :	IEC 61869-10
Primary Current:	60A, Ext. 200%
Secondary Output:	225 mV
Burden:	$\geq 20\text{k}\Omega$
Rated short time thermal current:	25kA, 1 sec.
Insulation voltage:	0,72 / 3 / - kV
Accuracy class:	1 / 0,5 by using correction factor
Protection class:	5P10
Operating temperature:	-25 C to +65 C

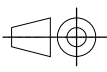
### **ALCE Elektrik San. ve Tic. A.Ş**

Ramazanoğlu Mah. Transtek Cad. No:6 34906 Pendik-İSTANBUL  
sales@alce-elektrik.com.tr (+90) 216 585 42 00



Norm: IEC 61869-10  
 Insulation level: 0,72kV/3kV/-  
 Temperature category: -25/65°C  
 Accuracy class:  
 Cl1 initial  
 Cl0,5 with std. corr. factor  
 Ratio: 60A/225mV  
 Ith: 25kA 1sec.

QTY	DESCRIPTION				POS	DIMENSIONS	WEIGHT	PART OR DIN NO.	MATERIAL	
	NO	DATE	NAME	MODIFICATION						
							02.11.2022			
	TOLERANCES DIN ISO 2768-1 (c)		LPCT-A160				MATERIAL CODE		REV	
	SCALE 1/1						220144		-	
			REPLACES THE DRAWING NO.				DR'N			
							CH'D			
							APP'D			



AG Ölçü Trafo